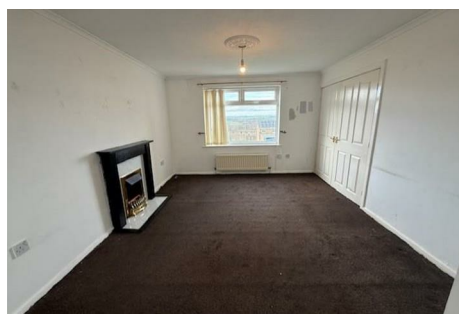


GILMORE ESTATES

Property Sales & Lettings



Ottercops

, Prudhoe, NE42 6LQ

We have received an offer of £110,000. Any increased offers are to be received within 5 days of this publication at the above agents.

£99,950

Ottercops

, Prudhoe, NE42 6LQ



- THREE BEDROOMS
- FRONT AND REAR GARDENS
- VACANT POSSESSION
- END TERRACE
- DOUBLE GLAZED WINDOWS
- GAS CENTRAL HEATING
- INVESTMENT OPPORTUNITY

ENTRANCE HALL

LOUNGE/DINING ROOM

11'6" x 24'5" (3.51 x 7.45)

KITCHEN

9'1" x 12'0" (2.78 x 3.68)

FIRST FLOOR LANDING

BATHROOM

8'5" x 6'5" (2.57 x 1.97)

BEDROOM ONE

12'11" x 8'9" (3.96 x 2.69)

BEDROOM TWO

10'6" x 9'0" (3.22 x 2.76)

BEDROOM THREE

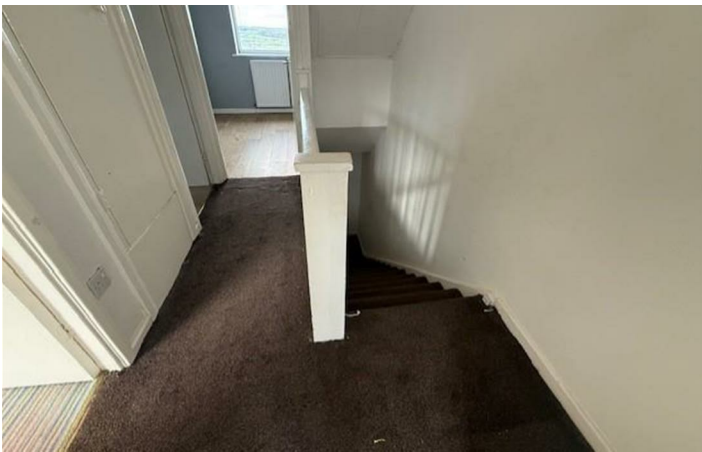
9'1" x 8'7" (2.79 x 2.64)

EXTERNALLY

GARAGE



[Directions](#)





Floor Plan

These particulars, whilst believed to be accurate are set out as a general outline only for guidance and do not constitute any part of an offer or contract. Intending purchasers should not rely on them as statements of representation of fact, but must satisfy themselves by inspection or otherwise as to their accuracy. No person in this firm's employment has the authority to make or give any representation or warranty in respect of the property.

